



STUDENTS ENJOYING FRESH FRUIT FROM THE TREES THAT ARE PART OF THE URBAN JUICING PROJECT

FRUIT TREES & FUNCTIONS

The vast open field outside the new school hall holds great opportunity. With direct access to the hall, extraordinary views of the city and mountain, and privacy from the rest of the school, this space could be utilized for functions, weddings, markets and more. This is a great opportunity to generate income and interest for the school. The simple implementation of pathways and ground textures can open this space to great opportunities.

To beautify the area, create a sense of intimacy, and to deal with mountain water runoff, fruit trees can be planted all along the periphery of the field. The produce from these trees can be part of the Urban Juicing project, and can also be enjoyed by students. The area will feel private and sheltered from the outside, without obstructing views - the perfect setting for any gathering or function.

The trees will drastically reduce flooding of the area and that precious water will not be wasted. The soil will be stabilised by the tree roots. The diversity of vegetation will also attract more birds and insects, creating a beautiful moment for students to enjoy and learn about nature.



STUDENTS ENJOY THE FRESH PRODUCE GROWN AT THEIR SCHOOL, AND MAKE USE OF AN OPPORTUNITY TO LEARN ABOUT THEIR ENVIRONMENT AND INDIGENOUS PLANTS

URBAN JUICING STATION & VEGETABLE GARDEN

The Urban Juicing initiative can set up their business on-site, where they will be in close proximity to the fruit trees and vegetable garden to harvest produce. An old storage room can be converted to accommodate these functions. Juices can then be distributed around the city and some can be sold/given to students and visitors. A programme could be implemented to allow students to donate their time to help with the cultivation and harvesting processes, in exchange for fresh juices on a daily basis. This is an excellent opportunity for an environmental society to form, where students can have hands-on experience working with nature and learning to create a sustainable future.

BENCHES FOR SPECTATORS

Sports are a fundamental part of learning, socialising and staying active. To facilitate a fun and exciting atmosphere, celebrate these activities by welcoming spectators and participation. Partially sheltered benches create an opportunity to watch the game, rest or spend your lunch time in comfort and shade. By being open on both sides, spectators can enjoy activities on either of the adjacent courts.



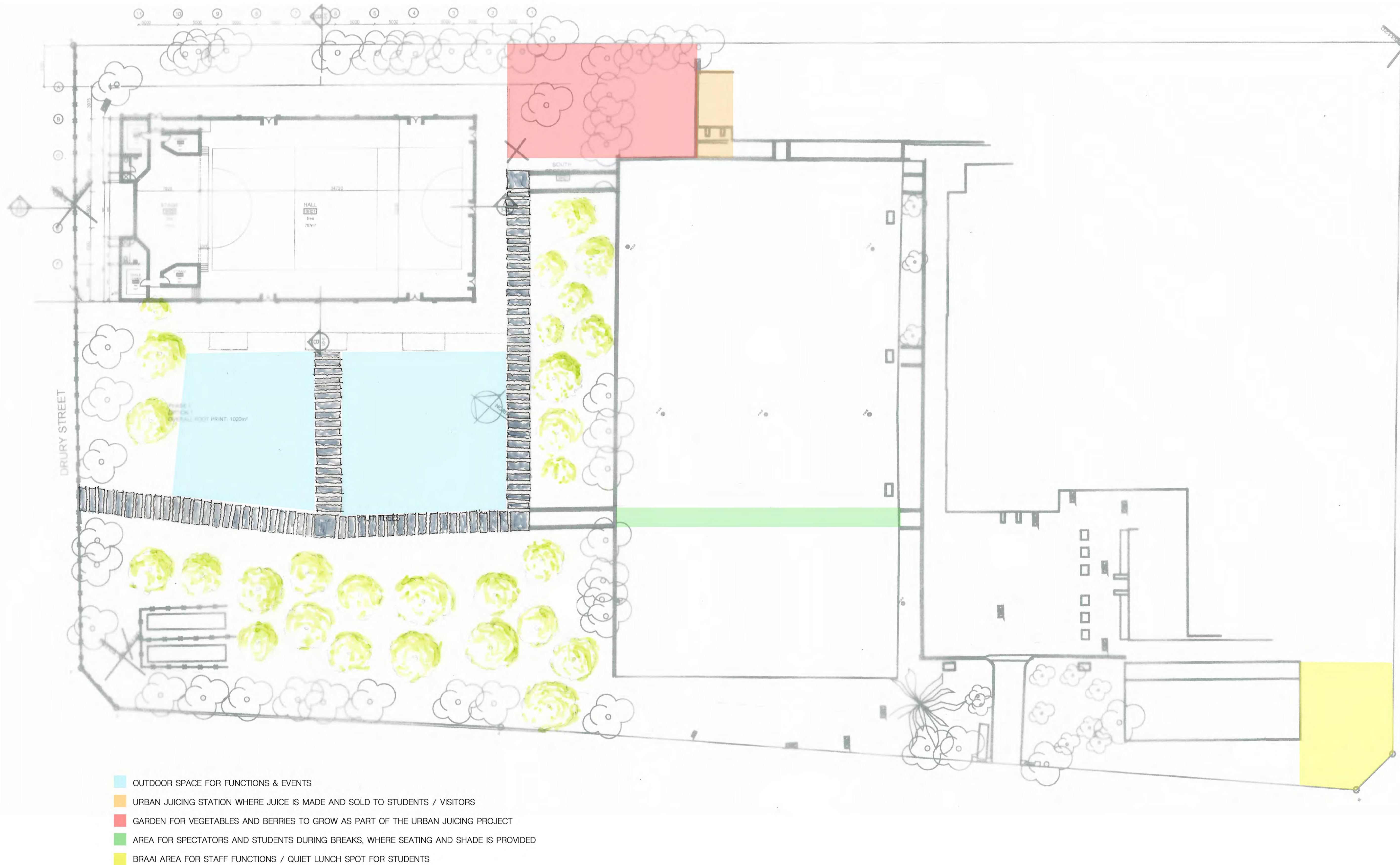
THE SPORTS GROUNDS BECOME A SOCIAL AND INTERACTIVE AREA WITH THE OPPORTUNITY FOR SHADE AND REST



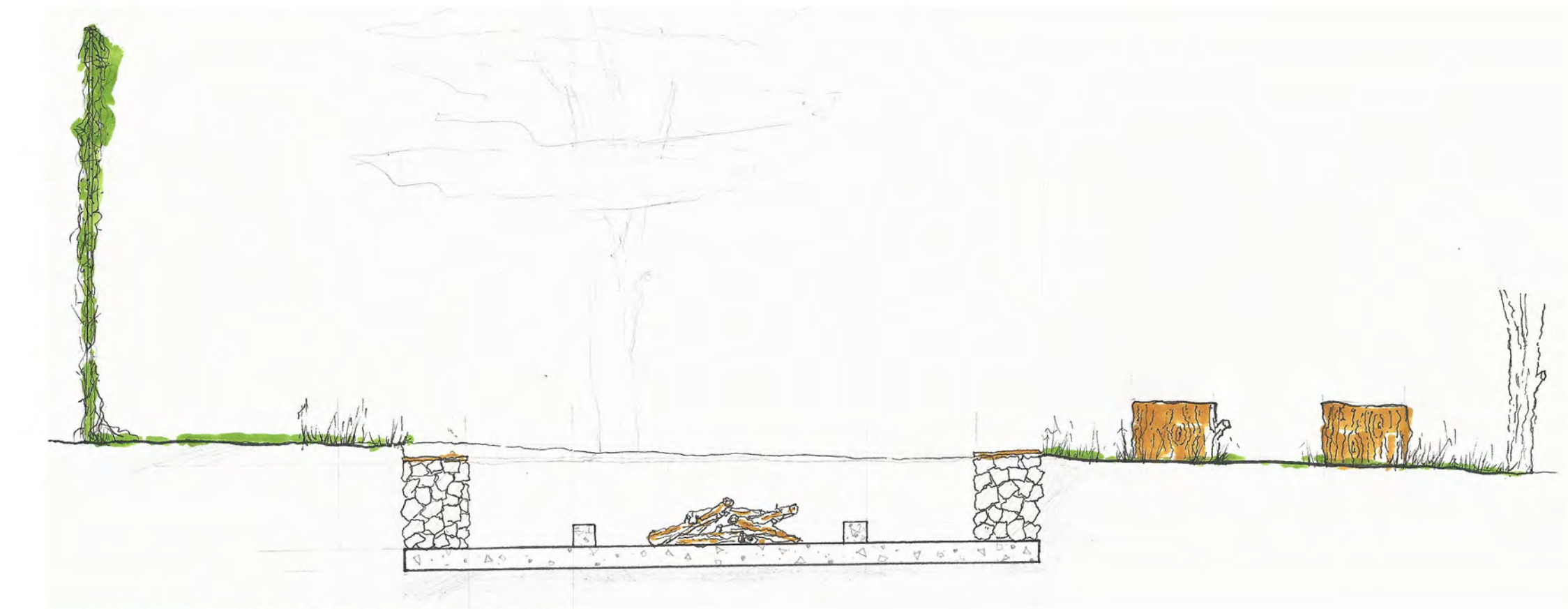
SPECTATORS ARE WELCOME TO SIT AND ENJOY THE GAME

HAROLD CRESSY HIGH SCHOOL: A VISION FOR FUTURE SUSTAINABILITY

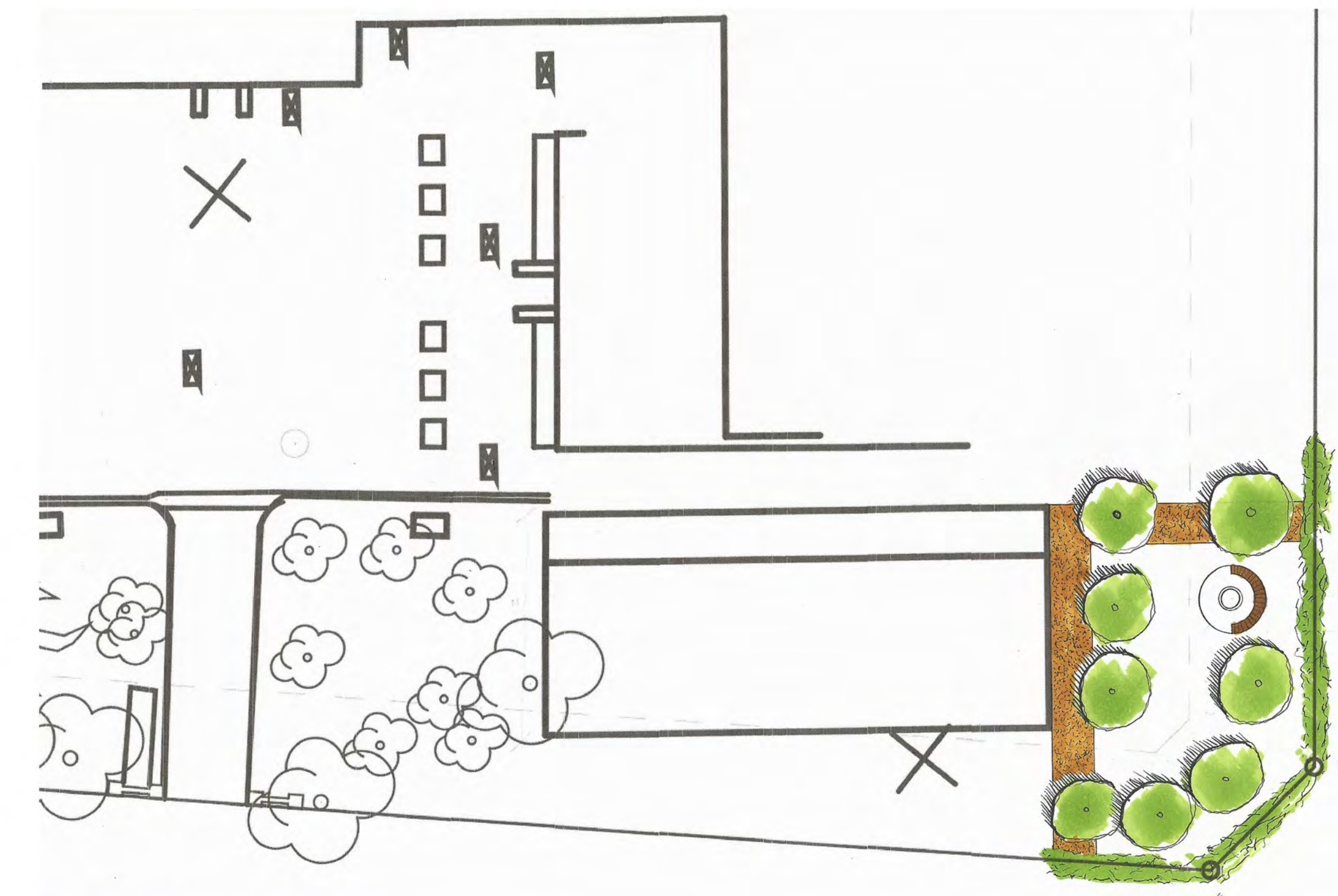
BY UCT ARCHITECTURE STUDENTS IN CONJUNCTION WITH THE UCT KNOWLEDGE CO-OP



A BRAAI AREA FOR STAFF FUNCTIONS / A QUIET LUNCH SPOT FOR STUDENTS



SECTION THROUGH BRAAI AREA - SCALE 1:25



PLAN OF BRAAI AREA - SCALE 1:200