

What is eResearch?

Emerging Researcher Seminar

31 October 2019

Dr Dale Peters and Renate Meyer
UCT eResearch



UCT 
eResearch
ACCELERATING RESEARCH

Why eResearch?

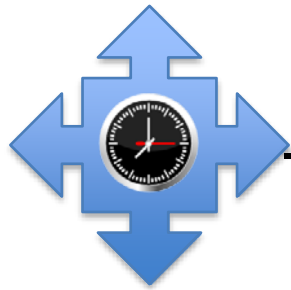


The world of research is changing

Researchers rely much more on ICT as a component of their research, whether it is management of data or the software and tools for undertaking their research, or in collaboration and finding collaborators.

KEY CHANGES

IMPLICATIONS



Pace and scale increasing

- Technology is accelerating the pace and scale of research
- Large-scale data requires more structured data management approach

Storage, data management and tools



New tools and methodologies

- New and more powerful instruments
- Digital recognition of text, speech and imagery
- Crowdsourcing and citizen science

Expert guidance on leveraging new approaches



Internationalisation

- Research funding/ status is increasingly based on strong international collaborations
- New funding instruments to address Global Challenges
- Research is conducted in international infrastructures

Capability to establish and support collaborations

SOUTH AFRICAN

RESEARCH INFRASTRUCTURE ROADMAP

FIRST EDITION



Table 2: Selected SARIR RIs based on meta-design reports

Scientific domain	Identified research infrastructure
Humans and society	South African network of health and demographic surveillance sites
Health, biological and food security	National centre for digital language resources
	Distributed platform for "omics" research
	Bio banks
Earth and environment	Nuclear medicine research facility
	South African marine and Antarctic research facility
	Biogeochemistry research infrastructure platform
	Expanded national terrestrial environmental observation network
	Shallow marine and coastal research infrastructure
Materials and manufacturing	Natural sciences collection facility
	Nano-micro manufacturing facility
	Materials characterisation facility
Energy	Solar research facility



European Strategy Forum
on Research Infrastructures

ESFRI

European Research Infrastructures with global impact

Some examples from the ESFRI Roadmap

https://ec.europa.eu/research/infrastructures/pdf/esfri_brochure_0113.pdf

Why eResearch?



SWITCH



eRESEARCHSA



Research Revolution

Pace and scale increasing

New tools and methodologies

Internationalisation

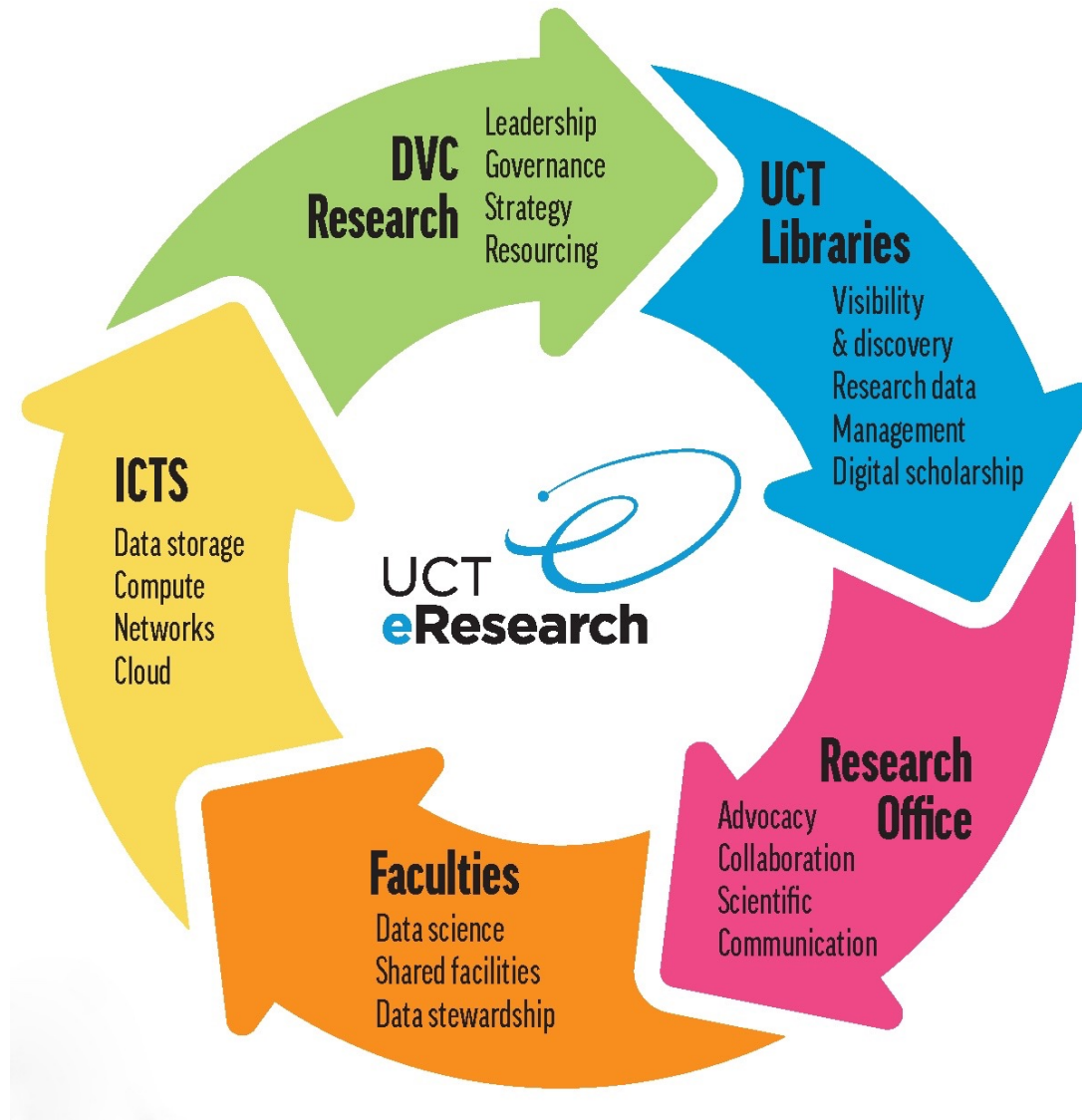


Partnering with Researchers to Accelerate Discovery



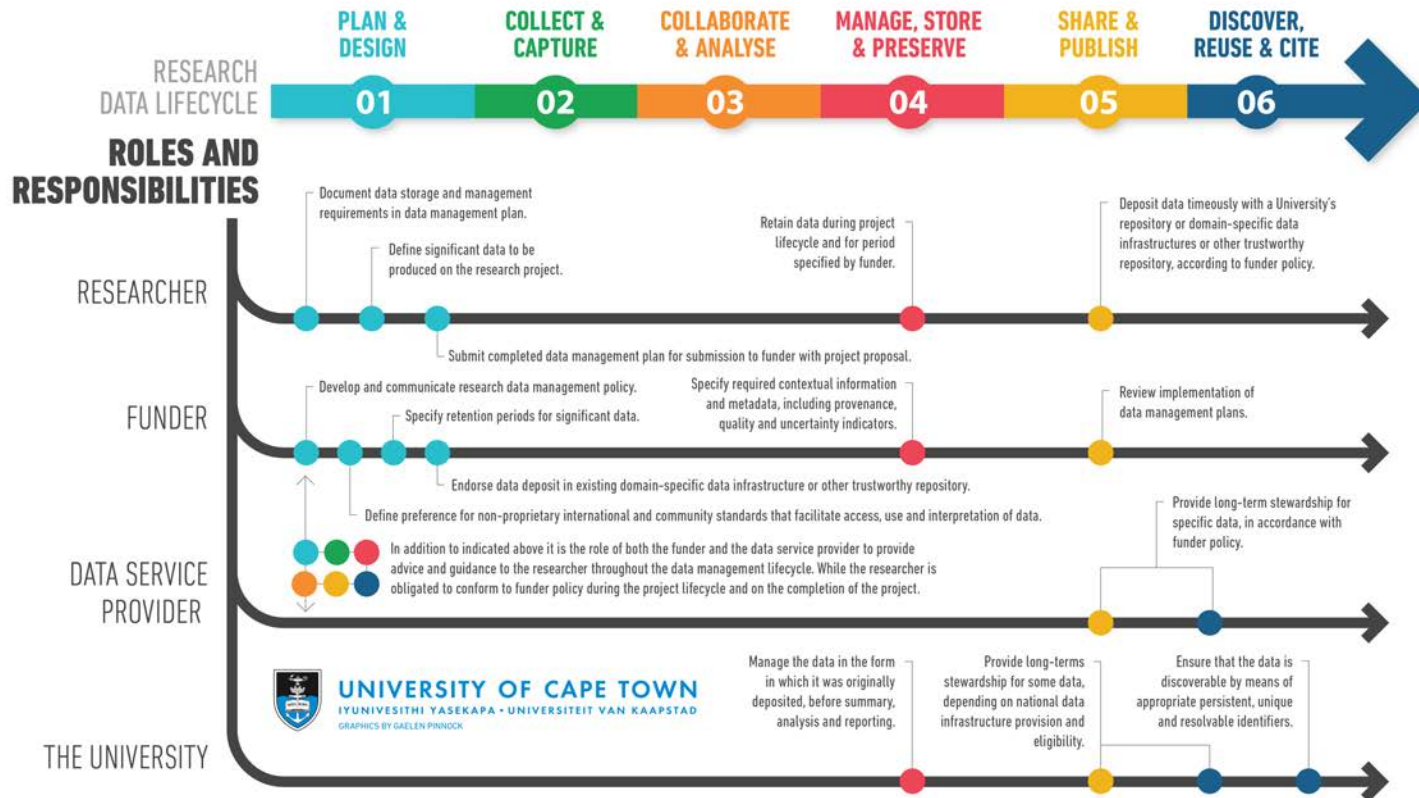
How eResearch can help you





Delivering efficiencies that save researchers time and money

Each researcher has a workflow for their research lifecycle. eResearch explores the question of how we can strengthen that research workflow (or 'pipeline') using the latest tools, technologies and approaches.



+134:23:454:12

eraonline.uct.ac.za/converis/portal/overview?lang=en_GB

Home | Informatio... | Human Resources | Employee Self-Se... | eResearch | UCT eResearch -... | Google Scholar | sharepoint | White Pages

UCT Research Portal

UNIVERSITY OF CAPE TOWN
IFUNIVESITHI YASEKAPA • UNIVERSITEIT VAN KAAPSTAD


UCT | Research support hub | Research & Innovation | UCT libraries | UCT eResearch

Home | People | Faculties and departments | UCT research outputs | Research keywords | Support

Welcome to the University's Research Portal


Visitors to the portal can find out more about UCT's research strengths, projects, and publications, or search for and connect with potential collaborators.

If you know which research area, organisational unit or researcher you are looking for you can use the general search bar below. Alternatively, you can browse and filter the information using the toolbar on the left.



← → ↻ ⓘ Not Secure | researchsupport.uct.ac.za

Apps | Home | Informatio... | Human Resources | Employee Self-Se... | eResearch | UCT eResearch -... | Google Scholar | sharepoint | White Pages

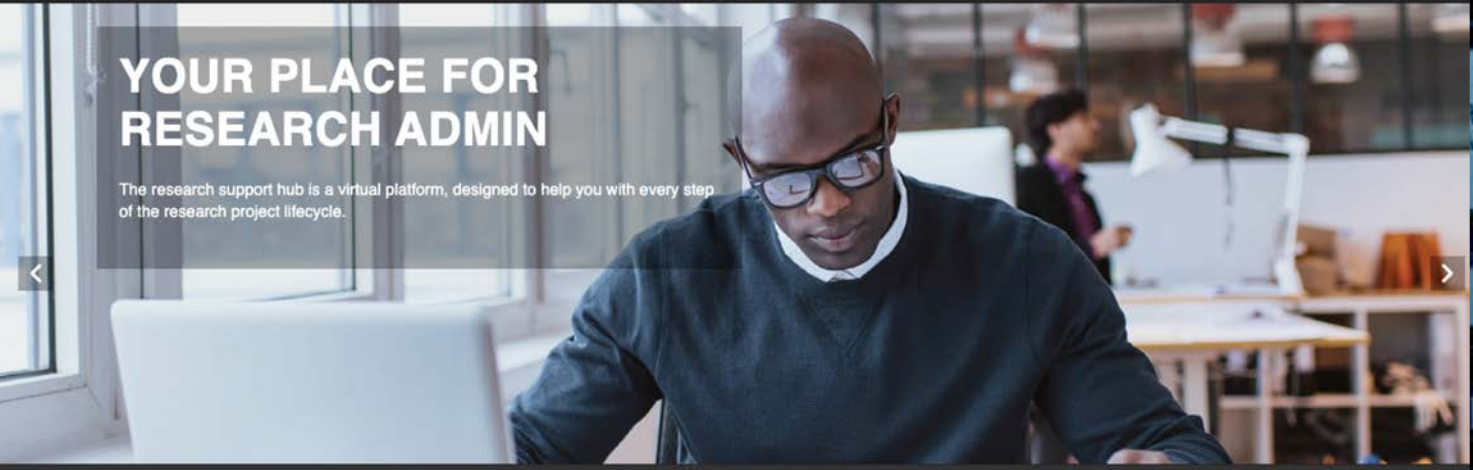
 **Research Support Hub**

Home | About | Research Announcements | eRA Login

RESEARCHER DEVELOPMENT | FUNDING & CONTRACTS | INTEGRITY | RESEARCH DATA | OUTPUTS | ACCREDITATION & EVALUATION | ERA SYSTEM

YOUR PLACE FOR RESEARCH ADMIN

The research support hub is a virtual platform, designed to help you with every step of the research project lifecycle.



134:23:454:12

134:23:454:12





- [Emerging researcher programme](#)
- [Research data management training](#)
- [Basic and advanced Linux programs](#)

Basic and advanced Linux programs for HPC

UCT's high-performance computing cluster has recently been upgraded, with a new workload manager. The HPC team are working on an updated curriculum for HPC training.

The next round of HPC training programmes are likely to start from 2020. Watch this space for more information.

In the meantime [please log a call](#) if you would like assistance with using the HPC facilities. Or visit the [HPC website](#).

eResearch Report: 2018–19



The research landscape is rapidly changing, with new technologies enabling new forms of collaboration, data gathering and analysis. UCT eResearch – a distributed organisation made up of a partnership between ICTS, UCT Libraries and the Research Office – is the university's response to this changing research landscape. This report, the fifth annual eResearch report, details the coordinated effort of research support units and the response of researchers as they integrate eResearch capabilities into technology-enabled research practice.

eResearch FAQ's



Why eResearch?

To accelerate outputs and competitiveness in support of UCT's research agenda

What does eResearch do?

Partner with researchers to find and build solutions for technological and data management challenges

What is the difference between eResearch and ICTS?

ICTS focuses on enterprise services such as email and security. eResearch only supports research functions and relies on ICTS for infrastructure

What is the role of the Libraries and the Research Office?

The libraries are involved in research data management planning and advice and the research office is responsible for advocacy and outreach

How do I get hold of eResearch?

ereseach@uct.ac.za or <http://www.eresearch.uct.ac.za/>

What do eResearch services cost?

Our cost model is available on the website at:

<http://www.eresearch.uct.ac.za/billing-model>

Can staff and students both make use of eResearch services?

Absolutely, if you are a researcher you can work with eResearch

Who typically makes use of eResearch, and how?

Generally it is principal investigators who approach us but often it's their students too

Do you work with individual researchers or only communities?

We prefer to work with communities of researchers because in this way our efforts have the greatest impact for the least cost

Do you work with Humanities and Social Sciences, or only with Sciences?

We are happy to assist any researcher